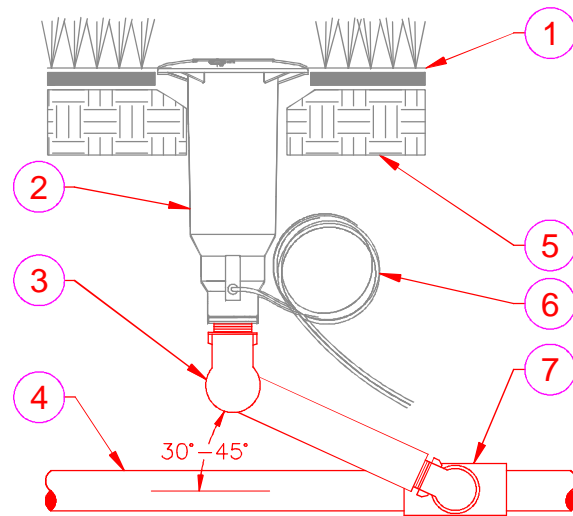


**LASCO®**  
Fittings, Inc.



- ① FINISHED GRADE.
- ② ACME INLET SPRINKLER HEAD, V.I.H., SEE LEGEND FOR PART NUMBER.
- ③ LASCO SWING JOINT. PUT A X IN THE BOX TO DETERMINE SIZE AND INLET/OUTLET ENDS WANTED.
- ④ LATERAL PVC PIPE.
- ⑤ APPROVED BACKFILL.
- ⑥ ELECTRICAL WIRING 24V, WITH 36" SERVICE/EXPANSION COIL.
- ⑦ LASCO ACME THREADED SERVICE FITTING.

ACME INLET X ACME OUTLET SWING JOINTS (HORIZONTAL MOUNT)

- 1" Swing Joint, ACME 1½" Inlet x 1" ACME Outlet, Part #G1M0-212
- 1¼" Swing Joint ACME 1½" Inlet x 1" ACME Outlet, Part #G2MC-212
- 1¼" Swing Joint ACME 1½" Inlet x 1¼" ACME Outlet, Part #G2M0-212
- 1½" Swing Joint ACME 1½" Inlet x 1" ACME Outlet, Part #G3MC-212
- 1½" Swing Joint ACME 1½" Inlet x 1¼" ACME Outlet, Part #G3MA-212
- 1½" Swing Joint ACME 1½" Inlet x 1½" ACME Outlet, Part #G3M0-212

NOTE : ALL ACME INLETS ARE 1½" ACME FOR SWING JOINT SIZES 1" THRU 1½" SWING JOINTS ARE REDUCED TO SIZE AT INLET FITTING. DO NOT USE TAPE OR SEALANT ON ACME THREADS. **SEE ACME SERVICE FITTINGS FOR ACME SERVICE FITTING OFFERINGS.**

00

LASCO SWING JOINT W/ACME INLET/OUTLET

N.T.S.

DETAIL-FILE